



CDF

Compact Density Fibreboard



Wood at its best

Creativity comes
in many shapes.



Contents



8

ARCHITECTURE
EXHIBITION



12

DESIGN
ART
FURNITURE



16

EDUCATIONAL
OFFICE
HOSPITAL
PUBLIC AREA



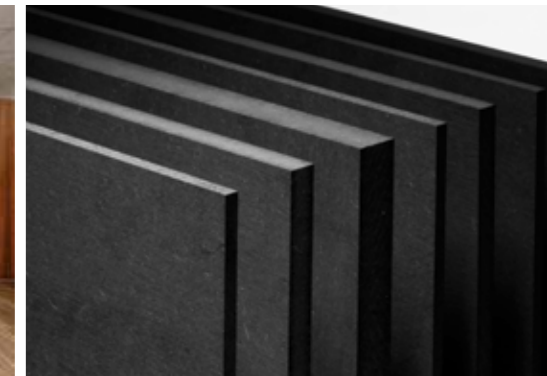
20

RESTAURANT
STORE
HOTEL



24

WC/CUBICLE
PARTITION
LOCKER



26

SUSTAINABILITY
PROCESSING
TECHNICAL DATA



andbook

Trust your
intuition.



Scratch resistant

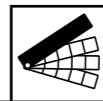
ARCHITECTURE
EXHIBITION



EN Architecture is the art of bringing form, material and functionality into harmony and getting the very best out of it. **CDF** is unique in terms of its design, density and robustness. Put **CDF** in the limelight.

If you can
imagine it,
you can
create it.




A variety of colours and structures

DESIGN
ART
FURNITURE



©www.bond.com



©www.formaat.de



www.ackermannmbh.de



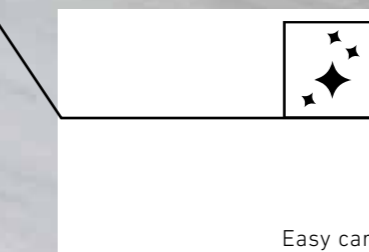
www.mocoba.de



EN Thanks to its multi-ply design, **CDF** is predestined for the production of complex and sophisticated routed structures, such as text, logos and joints. With the latest laser and CNC techniques, your creativity knows no limits.

EDUCATIONAL
OFFICE
HOSPITAL
PUBLIC AREA

It is only empty space
until you fill it
with ideas.



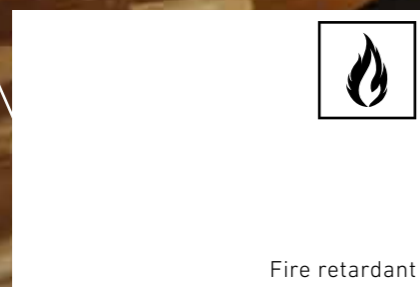


EDUCATIONAL
OFFICE
HOSPITAL
PUBLIC AREA



www.bigla.ch

EN Specific applications require a careful selection of materials. **CDF** can be pressed with all the textures and decors of the «One World



Look beyond the obvious
to find something
special.

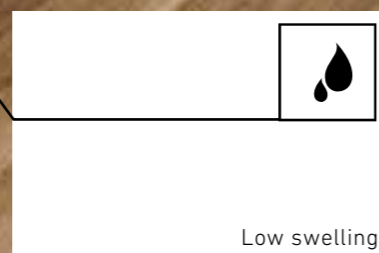
RESTAURANT
STORE
HOTEL



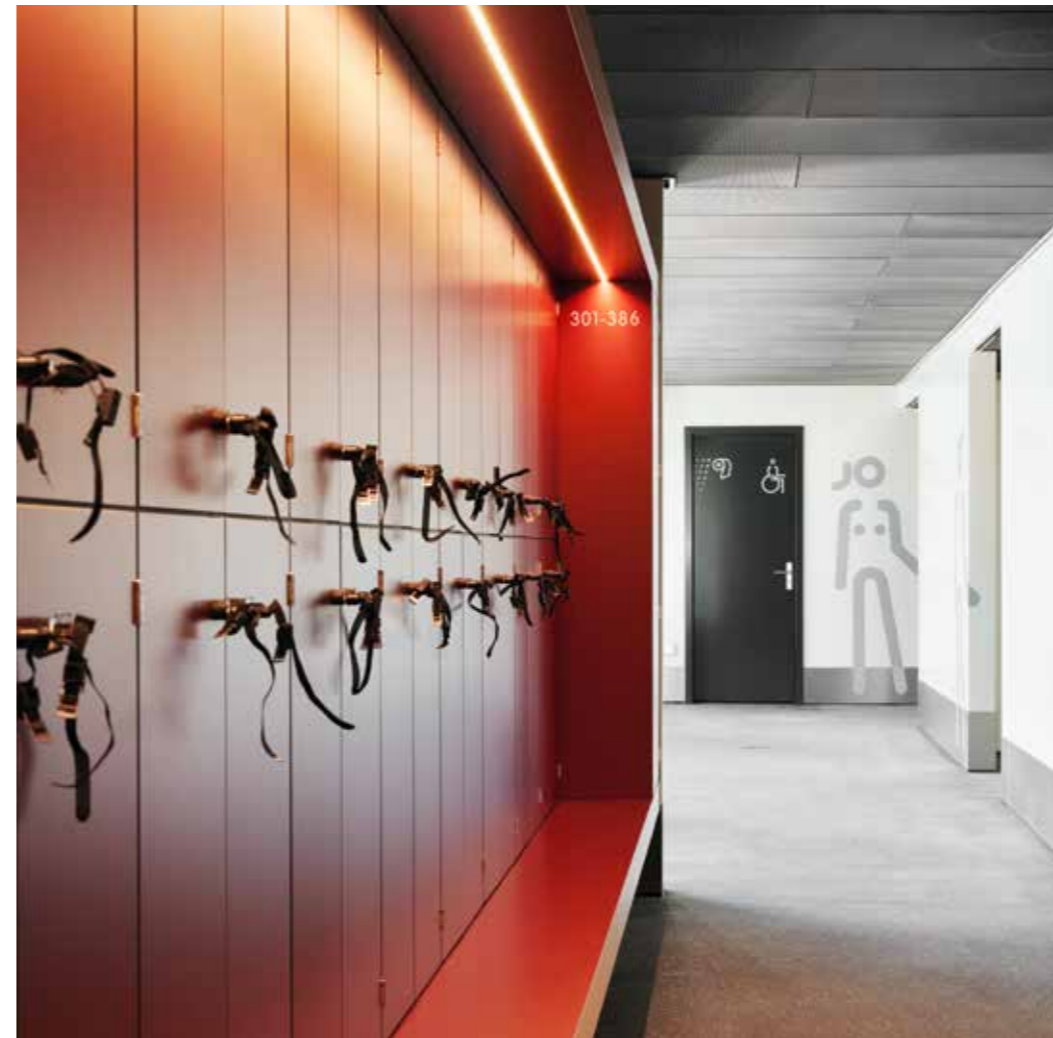
CDF

EN A fire retardant requirement often limits the choice of materials. **CDF** meets the requirements according to EN 13501-1 which increases its range of use vastly.

It's hard to make it
look easy.



WC/CUBICLE
PARTITION
LOCKER



EN Allow places that seem unspectacular to become an experience! **CDF** is splash water resistant and therefore perfectly suitable for creative applications that are typically encountered in environments with high humidities.

CDF is ecofriendly



- EN** CDF is environmentally friendly
- Made from Swiss wood that originates from sustainably managed forrests
- 90 % renewable energies are used during its production
- CDF completely integrates into cascade use of the wood cycle and is biodegradable
- Saves CO₂ and protects the environment

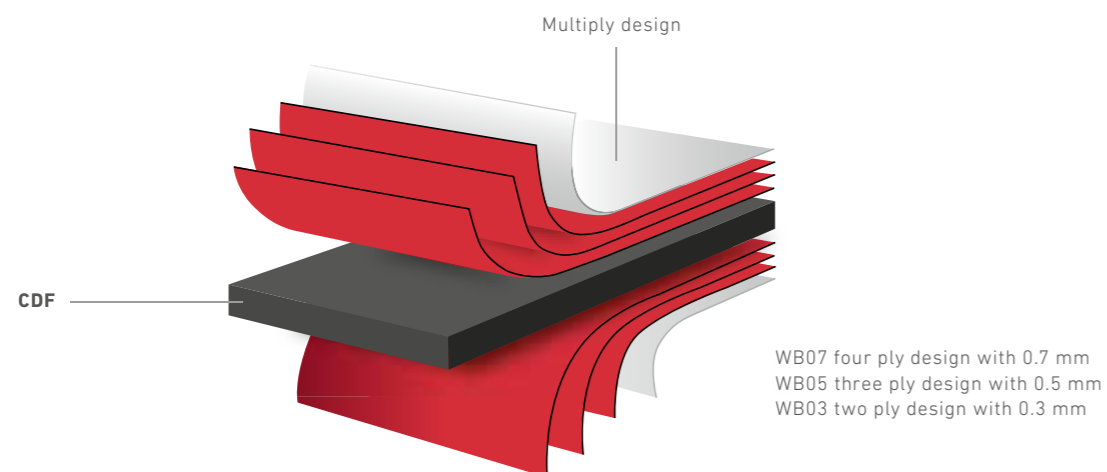
Processing

EN Processing
For connection purposes, conventional screws, bondings and adhesive techniques can be used. The material can also be varnished without the need for fillers or intermediate sanding. In this context, we recommend the «Recommendation for Mechanical Processing» brochure that was created in collaboration with LEUCO.

Technical Data

CDF

High density wood fibreboard (>1,000 kg/m³)



WB07 four ply design with 0.7 mm
WB05 three ply design with 0.5 mm
WB03 two ply design with 0.3 mm


STOCK PROGRAM

Format (mm)	Design ¹⁾	Panel thickness (mm)						
Raw		6.0	8.0	10.0	12.0	12.4	16.0	19.0
2800 x 2070	-	•	•	•	•	•	•	•
5600 x 2070 (5^m)	-	•	•	•	•	•	•	•
K101 PE U164 PE U190 PE U191 PE	WB03	6.4	8.4	10.4	12.4	13.0*	16.4	19.4
2800 x 2070		•	•	•	•	-	•	•
Further decors available on request								
ONE WORLD SWISS COLLECTION 2800 x 2070	WB03	6.4*	8.4*	10.4*	12.4*	13.0*	16.4*	19.4*
	WB05			10.8*	12.8*	13.4*	16.8*	19.8*
	WB07			11.2*	13.2*	13.8*	17.2*	20.2*

¹⁾ Design: WB03: two ply design, WB05: three ply design, WB07: four ply design

• Available ex-works

* special productions: from 10 boards

-  Low swelling
-  Low flammability
-  Shock resistant
-  Scratch resistant
-  Processing friendly
-  Low emissions
-  Environmentally friendly
-  Easy care
-  Hygienic
-  A wide variety of colours and structures

RAW BOARD

CDF (acc. to EN 622-5: Fibreboards – requirements for the boards after drying process MDF)

Testing Parameter	6.0	8.0	10.0	12.0	12.4	16.0	19.0	mm	MDF 12 mm comparison	Standard
Thickness	6.0	8.0	10.0	12.0	12.4	16.0	19.0	mm		EN 324-1
Thickness tolerance	±0.2	±0.2	±0.2	±0.2	±0.2	±0.2	±0.2	mm		EN 324-1
Raw density	1'000	1'000	1'000	1'000	1'000	1'000	1'000	kg/m ³	750	EN 323
Bending strength	55	50	50	50	50	45	45	N/mm ²	22	EN 310
Bending modulus of elasticity	5'000	5'000	5'000	5'000	5'000	4'500	4'500	N/mm ²	2'500	EN 310
Resistance to direct pull	2.0	2.0	2.0	2.0	1.8	1.8	1.6	N/mm ²	0.6	EN 319
Face strength	2.3	2.3	2.3	2.3	2.3	2.3	2.3	N/mm ²	1.0	EN 311
Panel humidity	≥5	≥5	≥5	≥5	≥5	≥5	≥5	%		EN 322
Thickness swelling	<7	<7	<5	<5	<5	<5	<5	%	15	EN 317
Thermal conductivity	0.18	0.18	0.18	0.18	0.18	0.18	0.18	W/(mK)		EN 13986
Airborne sound insulation	23	25	26	27	27	28	29	dB		EN 13986
Formaldehyde emission CARB II	<0.13	<0.11	<0.11	<0.11	<0.11	<0.11	<0.11	ppm		ASTM E 6007
Formaldehyde emission E1	<0.1	<0.1	<0.1	<0.1	<0.1	<0.1	<0.1	ppm		EN 717-1
Formaldehyde cont.	<8	<8	<8	<8	<8	<8	<8	mg/100g		EN 120
Fire classification	B-s2,d0 flame-retardant (limited smoke development, no dripping) approved for the following usage: freestanding, on a metal profile, directly onto A1, A2-s1									EN 13501-1
Lindan Pentachlorophenol PCP	n.b. n.b. (n.b. = non-determinable)									ChemVerbotV

LAMINATED BOARD

CDF (acc. to EN 14322: Melamine-coated boards for indoor applications)

Testing Parameter	WB03	WB05	WB07	Unit	Standard
Abrasion resistance	3A	3A	3A	Class [1-4]	EN 14322
Scratch-resistance behaviour	3.5	3.5	3.5	N	EN 14322
Susceptibility to cracking	5	5	5	Class [1-5]	EN 14322
Shock resistance (large steel ball)	1'000	1'000	1'000	mm	EN 14322
Behaviour when exposed to steam	4	4	4	Level [1-5]	EN 14322
Colour / surface consistence	4	4	4	Level [1-5]	EN 14322
Resistance to staining	4	4	4	Level [1-5]	EN 14322
Light fastness	>4	>4	>4	Level	EN 14322
Edgeband swelling	<7	<7	<7	%	EN 13329
Formaldehyde emission	<0.4	<0.4	<0.4	mg/(m ² h)	EN 717-2
Fire classification	C-s2,d0 flame-retardant (limited smoke development, no dripping)				EN 13501-1
Tolerances	Thickness +0.5/-0.3 mm Length x width at 2.80 x 2.07 m ±5.0 mm, for cut shapes ±2.5 mm Edge chipping at 2.80 x 2.07 m ≤10 mm, for cut shapes ≤3 mm Surface defect: Spots ≤2 mm ² /m ² , longitudinal defects ≤20 mm/m				EN 14322
Ecology information	Renewable energy > 90 % wood fibre 65-75 % MUF adhesive 20-30 % Swiss wood does not contain old-forest no chlorides no biocides in the wood no heavy metals in the coating biologically/thermally recyclable				SIA 493.05